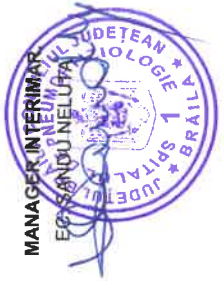
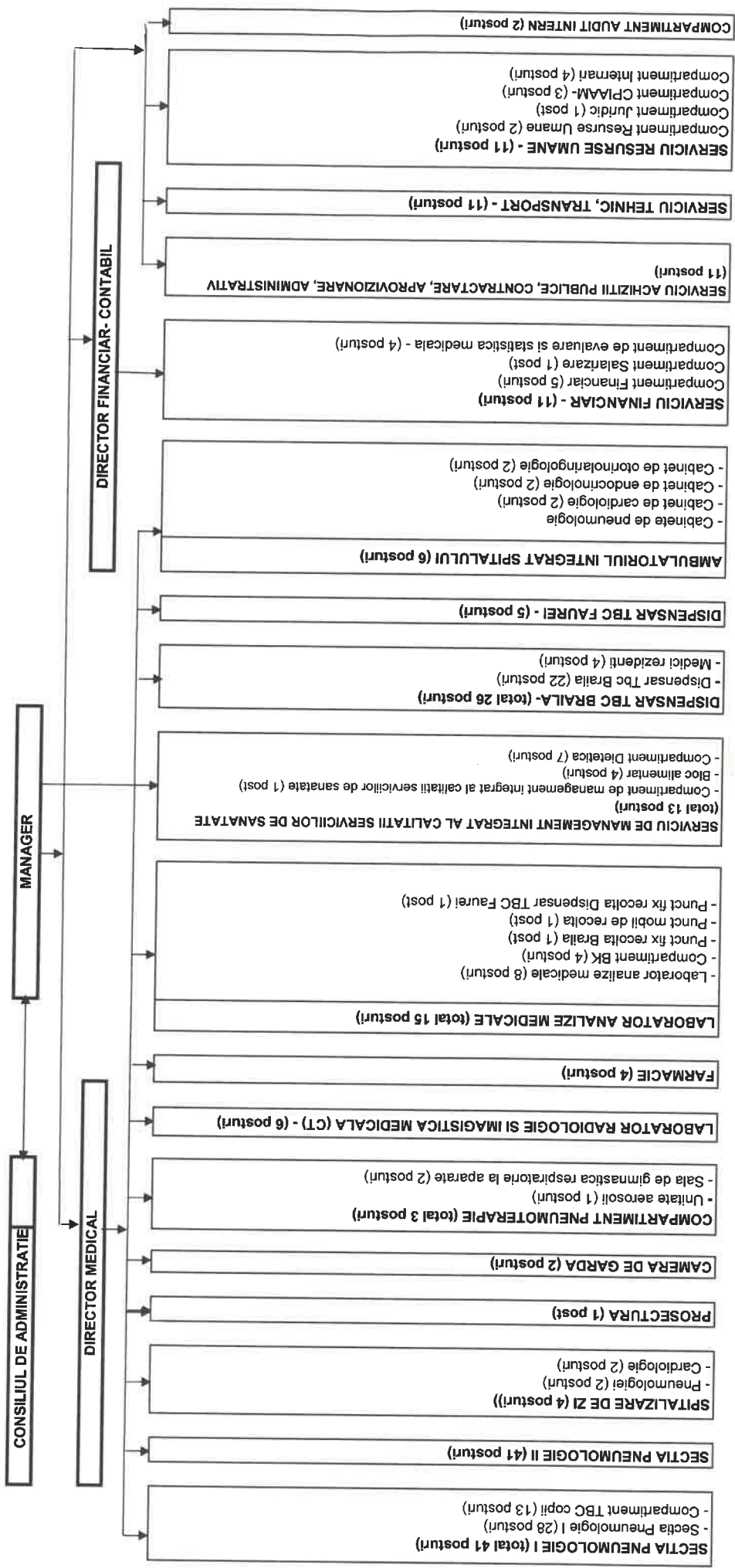


ANEXA NR. 1 LA HCY BRAHA NR. 99 / 2026

15 functii de conducere
201 functii de executie
216 posturi

CONSILIUL JUDETEAN BRAILA
SPITALUL DE PNEUMOTIZIOLOGIE
 Str. R.S. Campiniu Nr. 21, Braila, 810003,
 Tel: 0239 613 665; Fax: 0239 613 113
 www.spitaluitbcbrr.ro
 pneumo@spitaluitbcbrr.ro



CONSILIUL JUDETEAN BRAILA
SPITALUL DE PNEUMFTIZIOLOGIE
 Str. R.S. Campiniu Nr. 21, Braila, 810003,
 Tel: 0239 613 665; Fax: 0239 613 113
 www.spitalulitbcb.r.ro
 pneumo@spitalulitbcb.r.ro







15 functii de conducere
 201 functii de executie

STAT DE FUNCTII

CONDUCERE

Nr Crt.	Denumirea functiei	Grad profesional	Studii	Grad	Post	Observatii
1	Manager		S		1.0	INTERIMAR
2	Director financiar-contabil		S	II	1.0	INTERIMAR
3	Director medical		S		1.0	INTERIMAR

Total CONDUCERE 3.0

SECTII MEDICALE
SPITAL

SECTIA PNEUMOLOGIE I

Nr Crt.	Denumirea functiei	Grad profesional	Studii	Grad	Post	Observatii
4	Sef sectie		S		1.0	VACANT
5	Medic	Primar	S		1.0	SEF SECTIA PN I INTERIMAR
6	Medic	Primar	S		1.0	COORDONATOR AMBULATORIU
7	Medic	Primar	S		1.0	
8	Medic	Specialist	S		1.0	
9	Medic	Specialist	S		1.0	
10	Asistent sef	Principal	PL		1.0	
11	Asistent medical	Principal	PL		1.0	

12	Asistent medical	Principal	PL	1.0
13	Asistent medical	Principal	PL	1.0
14	Asistent medical	Principal	PL	1.0
15	Asistent medical	Principal	PL	1.0
16	Asistent medical	Principal	PL	1.0
17	Asistent medical	Principal	PL	1.0
18	Asistent medical	Principal	PL	1.0
19	Asistent medical	Principal	PL	1.0
20	Asistent medical	Principal	PL	1.0
21	Asistent medical	Principal	PL	1.0
22	Asistent medical	Principal	S	1.0
23	Asistent medical	Principal	PL	1.0
24	Asistent medical	Principal	PL	1.0
25	Infirmiera		G	1.0
26	Infirmiera		G	1.0
27	Infirmiera		G	1.0
28	Infirmiera		G	1.0
29	Infirmiera		G	1.0
30	Ingrijitoare		G	1.0
31	Psiholog	Practicant	S	1.0

Total SECTIA PNEUMOLOGIE I **28.0**

COMPARTIMENT TBC COPII

32	Medic	Primar	S	1.0	MEDIC COORD.
33	Asistent medical	Principal	PL	1.0	ASISTENT COORD.
34	Asistent medical		PL	1.0	VACANT
35	Asistent medical	Principal	PL	1.0	
36	Asistent medical	Principal	PL	1.0	
37	Asistent medical	Principal	PL	1.0	
38	Infirmiera		G	1.0	
39	Infirmiera		G	1.0	
40	Infirmiera		G	1.0	
41	Infirmiera		G	1.0	
42	Asistent medical	Principal	S	1.0	
43	Asistent medical		PL	1.0	VACANT
44	Kinetoterapeut		S	1.0	VACANT

Total COMPARTIMENT TBC COPII **13.0**

Total SECTIA PNEUMOLOGIE I **41.0**

SECTIA PNEUMOLOGIE II

Nr Crt.	Denumirea functiei	Grad profesional	Studii	Grad	Post	Observatii
45	Sef sectie		S		1.0	VACANT
46	Medic	Primar	S		1.0	SUSPENDAT TEMPORAR
47	Medic	Primar	S		1.0	SEF SECTIA PN II INTERIMAR
48	Medic	Specialist	S		1.0	
49	Medic	Primar	S		1.0	
50	Medic	Primar	S		1.0	
51	Medic	Primar	S		1.0	MEDIC COORDONATOR COMPARTIMENT PNEUMOTERAPIE
52	Asistent sef pe unitate	Principal	PL	II	1.0	ASISTENT SEF UNITATE
53	Asistent sef	Principal	PL		1.0	
54	Asistent medical	Principal	S		1.0	
55	Asistent medical	Principal	S		1.0	
56	Asistent medical	Principal	PL		1.0	
57	Asistent medical		PL		1.0	
58	Asistent medical	Principal	PL		1.0	
59	Asistent medical	Principal	S		1.0	
60	Asistent medical	Principal	PL		1.0	
61	Asistent medical	Principal	PL		1.0	
62	Asistent medical	Principal	PL		1.0	
63	Asistent medical	Principal	PL		1.0	
64	Asistent medical	Principal	PL		1.0	
65	Asistent medical	Principal	PL		1.0	
66	Asistent medical	Principal	PL		1.0	
67	Asistent medical	Principal	PL		1.0	
68	Asistent medical	Principal	PL		1.0	
69	Asistent medical	Principal	PL		1.0	
70	Infirmiera		G		1.0	
71	Infirmiera		G		1.0	
72	Infirmiera		G		1.0	
73	Infirmiera		G		1.0	
74	Infirmiera		G		1.0	
75	Infirmiera		G		1.0	
76	Infirmiera		G		1.0	SUSPENDAT TEMPORAR
77	Infirmiera		G		1.0	
78	Infirmiera		G		1.0	
79	Infirmiera		G		1.0	
80	Ingrijitoare		G		1.0	

SPITALIZARE DE ZI**Pneumologie**

Nr Crt.	Denumirea functiei	Grad profesional	Studii	Grad	Post	Observatii
86	Asistent medical	Principal	PL		1.0	VACANT
87	Infirmiera		G		1.0	

Total Pneumologie**2.0****Cardiologie**

Nr Crt.	Denumirea functiei	Grad profesional	Studii	Grad	Post	Observatii
88	Asistent medical	Principal	PL		1.0	VACANT
89	Ingrijitoare		G		1.0	

Total Cardiologie**2.0****Total SPITALIZARE DE ZI****4.0****PROSECTURA**

Nr Crt.	Denumirea functiei	Grad profesional	Studii	Grad	Post	Observatii
90	Ingrijitoare		G		1.0	

Total PROSECTURA**1.0****CAMERA DE GARDA**

Nr Crt.	Denumirea functiei	Grad profesional	Studii	Grad	Post	Observatii
91	Asistent medical		PL		1.0	VACANT
92	Infirmiera		G		1.0	

Total CAMERA DE GARDA**2.0**

COMPARTIMENT PNEUMOTERAPIE

UNITATE AEROSOLI

93	Asistent medical	Debutant	PL	1.0	VACANT
----	------------------	----------	----	-----	--------

Total UNITATE AEROSOLI 1.0

SALA DE GIMNASTICA RESPIRATORIE LA APARATE

94	Kinetoterapeut	Principal	S	1.0	
95	Asistent medical		PL	1.0	

Total SALA DE GIMNASTICA RESPIRATORIE LA APARATE 2.0

Total COMPARTIMENT PNEUMOTERAPIE 3.0

LABORATOR RADIOLOGIE SI IMAGISTICA MEDICALA (CT)

Nr Crt.	Denumirea functiei	Grad profesional	Studii	Grad	Post	Observatii
96	Medic	Primar	S		1.0	MEDIC COORD.
97	Medic	Specialist	S		1.0	VACANT
98	Asistent medical	Principal	PL		1.0	
99	Asistent medical	Principal	PL		1.0	
100	Asistent medical	Principal	PL		1.0	
101	Asistent medical	Principal	PL		1.0	ASISTENT COORD.

Total LABORATOR RADIOLOGIE SI IMAGISTICA MEDICALA (CT) 6.0

FARMACIE

Nr Crt.	Denumirea functiei	Grad profesional	Studii	Grad	Post	Observatii
102	Farmacist sef	Specialist	S		1.0	
103	Asistent medical	Principal	PL		1.0	
104	Asistent medical	Principal	PL		1.0	VACANT
105	Asistent medical	Principal	PL		1.0	

Total FARMACIE 4.0

LABORATOR ANALIZE MEDICALE

Nr Crt.	Denumirea functiei	Grad profesional	Studii	Grad	Post	Observatii
106	Sef laborator		S		1.0	
107	Biolog	Specialist	S		1.0	
108	Biolog	Specialist	S		1.0	
109	Asistent medical	Principal	PL		1.0	
110	Asistent medical	Principal	PL		1.0	
111	Asistent medical	Principal	PL		1.0	
112	Registrator medical		M		1.0	
113	Ingrijitoare		G		1.0	

Total LABORATOR ANALIZE MEDICALE 8.0

COMPARTIMENT BK

114	Biolog	Principal	S		1.0	BIOLOG COORD.
115	Asistent medical	Principal	PL		1.0	
116	Asistent medical	Principal	PL		1.0	
117	Ingrijitoare		G		1.0	

Total COMPARTIMENT BK 4.0

Punct fix recolta Braila

118	Asistent medical	Principal	PL		1.0	
-----	------------------	-----------	----	--	-----	--

Total Punct fix recolta Braila 1.0

Punct mobil de recolta

119	Asistent medical		PL		1.0	
-----	------------------	--	----	--	-----	--

Total Punct mobil de recolta

1.0

Punct fix recolta dispensar TBC Faurei

120	Asistent medical	Debutant	PL		1.0	VACANT
-----	------------------	----------	----	--	-----	--------

Total Punct fix recolta dispensar TBC Faurei

1.0

Total LABORATOR ANALIZE MEDICALE

15.0

SERVICIUL DE MANAGEMENT INTEGRAT AL CALITATII SERVICIILOR DE SANATATE

Nr Crt.	Denumirea functiei	Grad profesional	Studii	Grad	Post	Observatii
121	Sef serviciu		S	II	1.0	

Total SEF SERVICIU 1.0

COMPARTIMENT DE MANAGEMENT INTEGRAT AL CALITATII SERVICIILOR DE SANATATE

Nr Crt.	Denumirea functiei	Grad profesional	Studii	Grad	Post	Observatii
122	Referent de specialitate	I	S		1.0	

Total COMPARTIMENT DE MANAGEMENT INTEGRAT AL CALITATII SERVICIIL 1.0

BLOC ALIMENTAR

Nr Crt.	Denumirea functiei	Grad profesional	Studii	Grad	Post	Observatii
123	Muncitor calificat	I	G		1.0	
124	Muncitor calificat	II	G		1.0	
125	Ingrijitoare		G		1.0	
126	Muncitor necalificat	I	G		1.0	VACANT

Total BLOC ALIMENTAR 4.0

COMPARTIMENT DIETETICA

Nr Crt.	Denumirea functiei	Grad profesional	Studii	Grad	Post	Observatii
127	Asistent medical	Principal	PL		1.0	ASISTENT COORD.
128	Infirmiera		G		1.0	
129	Infirmiera		G		1.0	
130	Infirmiera		G		1.0	
131	Infirmiera		G		1.0	
132	Infirmiera		G		1.0	

133	Infirmiera		G		1.0
-----	------------	--	---	--	-----

Total COMPARTIMENT DIETETICA 7.0

Total SERVICIUL DE MANAGEMENT INTEGRAT AL CALITATII SERVICIILOR DE 13.0

TOTAL SPITAL 133.0

DISPENSAR TBC

DISPENSAR TBC BRAILA

Nr Crt.	Denumirea functiei	Grad profesional	Studii	Grad	Post	Observatii
134	Medic	Specialist	S		1.0	VACANT
135	Asistent medical	Principal	PL		1.0	ASISTENT COORD.
136	Asistent medical	Principal	PL		1.0	
137	Asistent medical	Principal	PL		1.0	
138	Asistent medical	Principal	PL		1.0	
139	Asistent medical	Principal	PL		1.0	
140	Asistent medical	Principal	PL		1.0	
141	Asistent medical	Principal	PL		1.0	
142	Asistent medical	Principal	PL		1.0	
143	Asistent medical	Principal	PL		1.0	
144	Asistent medical	Principal	PL		1.0	
145	Asistent medical	Principal	PL		1.0	
146	Asistent medical	Principal	PL		1.0	
147	Asistent medical	Principal	PL		1.0	
148	Asistent medical	Principal	PL		1.0	
149	Asistent medical	Principal	S		1.0	
150	Asistent medical	Principal	PL		1.0	
151	Asistent medical	Principal	PL		1.0	
152	Statistician medical	Principal	M		1.0	
153	Registrator medical	Principal	M		1.0	
154	Ingrjiitoare		G		1.0	
155	Ingrjiitoare		G		1.0	

Total DISPENSAR TBC BRAILA **22.0**

MEDICI REZIDENTI

Nr Crt.	Denumirea functiei	Grad profesional	Studii	Grad	Post	Observatii
156	Medic rezident	Anul IV-V	S		1.0	
157	Medic rezident	Anul IV-V	S		1.0	
158	Medic rezident	Anul IV-V	S		1.0	
159	Medic rezident	Anul II	S		1.0	

Total MEDICI REZIDENTI **4.0**

Total DISPENSAR TBC BRAILA **26.0**

DISPENSAR TBC FAUREI

Nr Crt.	Denumirea functiei	Grad profesional	Studii	Grad	Post	Observatii
160	Medic	Specialist	S		1.0	
161	Asistent medical	Principal	PL		1.0	
162	Asistent medical	Principal	PL		1.0	
163	Registrator medical	Principal	M		1.0	
164	Ingrijitoare		G		1.0	

Total DISPENSAR TBC FAUREI **5.0**

TOTAL DISPENSAR TBC **31.0**

AMBULATORIUL INTEGRAT AL SPITALULUI

CABINET DE CARDIOLOGIE

Nr Crt.	Denumirea functiei	Grad profesional	Studii	Grad	Post	Observatii
165	Medic	Primar	S		1.0	
166	Asistent medical		PL		1.0	SUSPENDAT TEMPORAR

Total CABINET DE CARDIOLOGIE **2.0**

CABINET DE ENDOCRINOLOGIE

Nr Crt.	Denumirea functiei	Grad profesional	Studii	Grad	Post	Observatii
167	Medic	Primar	S		1.0	VACANT
168	Asistent medical		PL		1.0	VACANT

Total CABINET DE ENDOCRINOLOGIE 2.0**CABINET DE OTORINOLARINGOLOGIE**

Nr Crt.	Denumirea functiei	Grad profesional	Studii	Grad	Post	Observatii
169	Medic	Specialist	S		1.0	VACANT
170	Asistent medical	Debutant	PL		1.0	VACANT

Total CABINET DE OTORINOLARINGOLOGIE 2.0**TOTAL AMBULATORIUL INTEGRAT AL SPITALULUI** 6.0**TOTAL SECTII MEDICALE** 170.0**APARAT FUNCTIONAL****SERVICIU FINANCIAR**

Nr Crt.	Denumirea functiei	Grad profesional	Studii	Grad	Post	Observatii
171	Sef serviciu		S	II	1.0	INTERIMAR

Total SEF SERVICIU 1.0**COMPARTIMENT FINANCIAR**

Nr Crt.	Denumirea functiei	Grad profesional	Studii	Grad	Post	Observatii
172	Economist	IA	S		1.0	SUSPENDAT TEMPORAR

173	Economist	IA	S	1.0	SUSPENDAT TEMPORAR
174	Economist	IA	S	1.0	
175	Economist	IA	S	1.0	
176	Economist	IA	S	1.0	SUSPENDAT TEMPORAR

Total COMPARTIMENT FINANCIAR **5.0**

COMPARTIMENT SALARIZARE

Nr Crt.	Denumirea functiei	Grad profesional	Studii	Grad	Post	Observatii
177	Referent de specialitate	III	S		1.0	

Total COMPARTIMENT SALARIZARE **1.0**

COMPARTIMENT DE EVALUARE SI STATISTICA MEDICALA

Nr Crt.	Denumirea functiei	Grad profesional	Studii	Grad	Post	Observatii
178	Asistent medical	Principal	PL		1.0	ASISTENT COORD.
179	Analist	IA	S		1.0	
180	Asistent medical	Principal	PL		1.0	
181	Operator date	Debutant	M		1.0	VACANT

Total COMPARTIMENT DE EVALUARE SI STATISTICA MEDICALA **4.0**

Total SERVICIU FINANCIAR **11.0**

SERVICIU ACHIZITII PUBLICE, CONTRACTARE, APROVIZIONARE, ADMINISTRATIV

Nr Crt.	Denumirea functiei	Grad profesional	Studii	Grad	Post	Observatii
182	Sef serviciu		S	II	1.0	
183	Economist	IA	S		1.0	
184	Muncitor calificat	IV	G		1.0	
185	Muncitor calificat	I	G		1.0	
186	Spalatoareasa		G		1.0	
187	Spalatoareasa		G		1.0	
188	Spalatoareasa		G		1.0	VACANT
189	Spalatoareasa		G		1.0	
190	Muncitor calificat	IV	G		1.0	

191	Economist	II		S		1.0
192	Ingrijitoare			G		1.0

Total SERVICIU ACHIZITII PUBLICE, CONTRACTARE, APROVIZIONARE, ADMINISTRAT 11.0

SERVICIU TEHNIC, TRANSPORT

Nr Crt.	Denumirea functiei	Grad profesional	Studii	Grad	Post	Observatii
193	Sef serviciu		S	II	1.0	
194	Muncitor calificat	III	G		1.0	
195	Muncitor calificat	I	G		1.0	
196	Muncitor calificat	I	G		1.0	
197	Muncitor calificat	II	G		1.0	
198	Muncitor calificat	II	G		1.0	
199	Muncitor calificat	IV	G		1.0	
200	Muncitor calificat	III	G		1.0	VACANT
201	Muncitor calificat	IV	M		1.0	
202	Muncitor calificat	IV	M		1.0	
203	Muncitor calificat	IV	M		1.0	

Total SERVICIU TEHNIC, TRANSPORT 11.0

SERVICIU RESURSE UMANE

Nr Crt.	Denumirea functiei	Grad profesional	Studii	Grad	Post	Observatii
204	Sef serviciu		S	II	1.0	

Total SEF SERVICIU 1.0

COMPARTIMENT RESURSE UMANE

Nr Crt.	Denumirea functiei	Grad profesional	Studii	Grad	Post	Observatii
205	Referent de specialitate	I	S		1.0	VACANT
206	Referent	Debutant	M		1.0	VACANT

Total COMPARTIMENT RESURSE UMANE 2.0

COMPARTIMENT JURIDIC

Nr Crt.	Denumirea functiei	Grad profesional	Studii	Grad	Post	Observatii
207	Consilier juridic	IA	S		1.0	

Total COMPARTIMENT JURIDIC 1.0

COMPARTIMENT CPIAAM

Nr Crt.	Denumirea functiei	Grad profesional	Studii	Grad	Post	Observatii
208	Medic	Primar	S		1.0	
209	Asistent medical	Principal	PL		1.0	
210	Asistent medical		PL		1.0	

Total COMPARTIMENT CPIAAM 3.0

COMPARTIMENT INTERNARI

Nr Crt.	Denumirea functiei	Grad profesional	Studii	Grad	Post	Observatii
211	Registrator medical	Principal	M		1.0	
212	Registrator medical	Principal	M		1.0	
213	Registrator medical		M		1.0	
214	Registrator medical	Debutant	M		1.0	VACANT

Total COMPARTIMENT INTERNARI 4.0

Total SERVICIU RESURSE UMANE 11.0

COMPARTIMENT AUDIT INTERN

Nr Crt.	Denumirea functiei	Grad profesional	Studii	Grad	Post	Observatii
215	Auditor	I	S		1.0	
216	Auditor	II	S		1.0	VACANT

Total COMPARTIMENT AUDIT INTERN 2.0

TOTAL SERVICII AUXILIARE 46.0

TOTAL GENERAL 216

Manager interimar,



Ec. Sandu Nețuța

Intocmit,

Serv. Resurse Umane

Sef serv. Malinche Diana-Mihaela